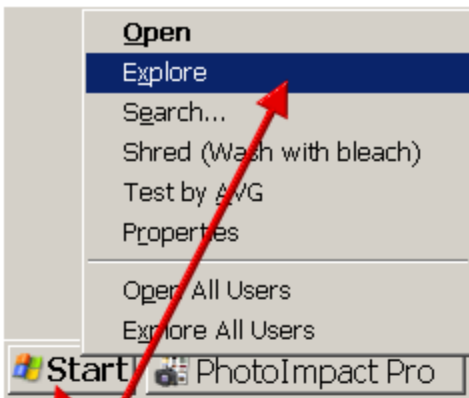


How to Find LOST PICTURES

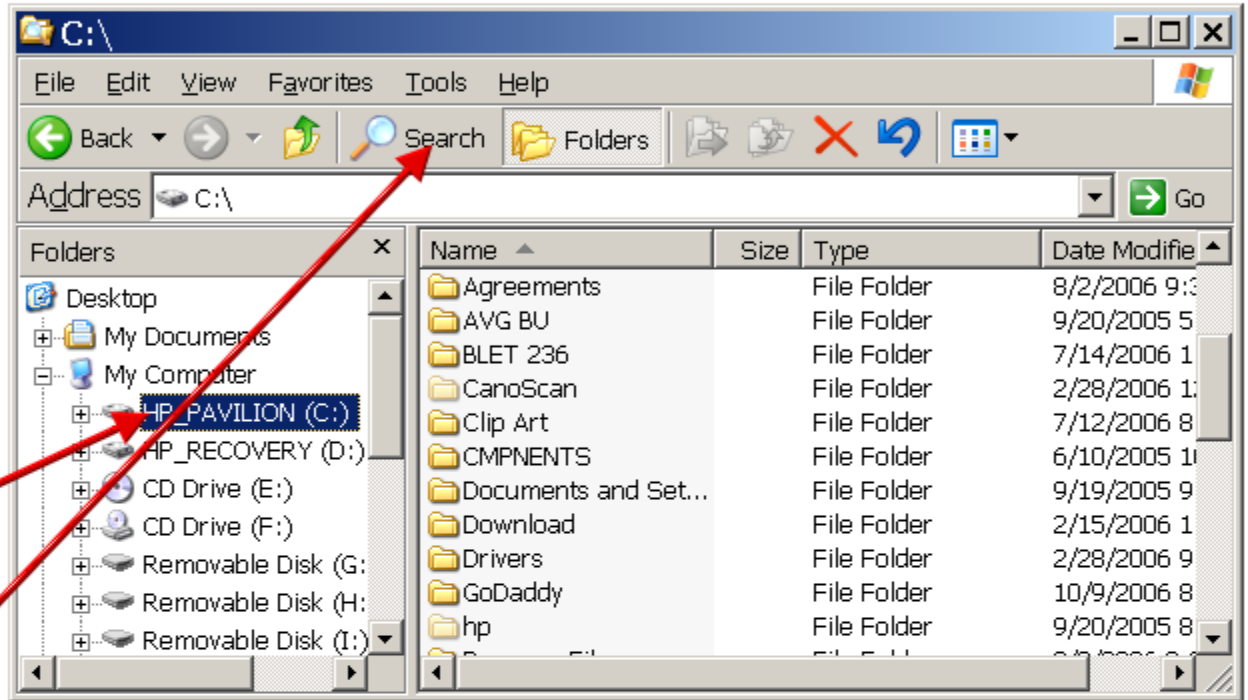
OR Hold Windows Key and Press "E"



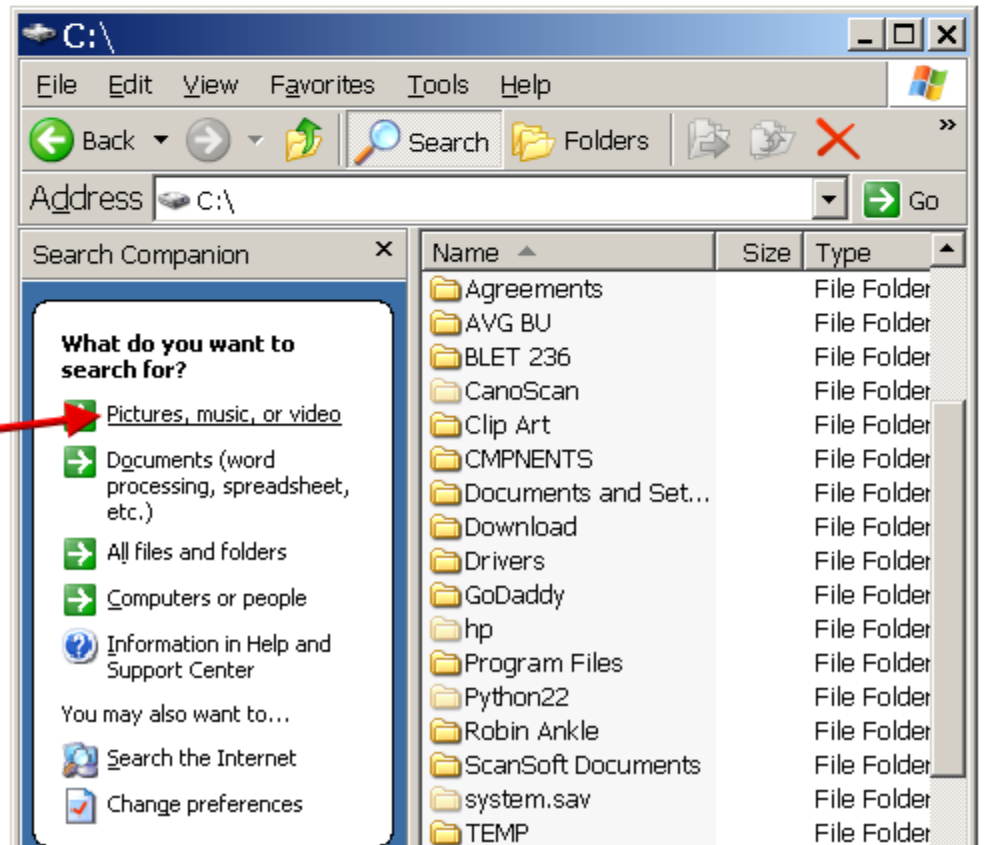
Right Click Start Then Select "Explore" By Left Clicking on Explore

Left Click on DRIVE you want to search chances are good it will be your "C:" drive

Next LEFT click on "Search"

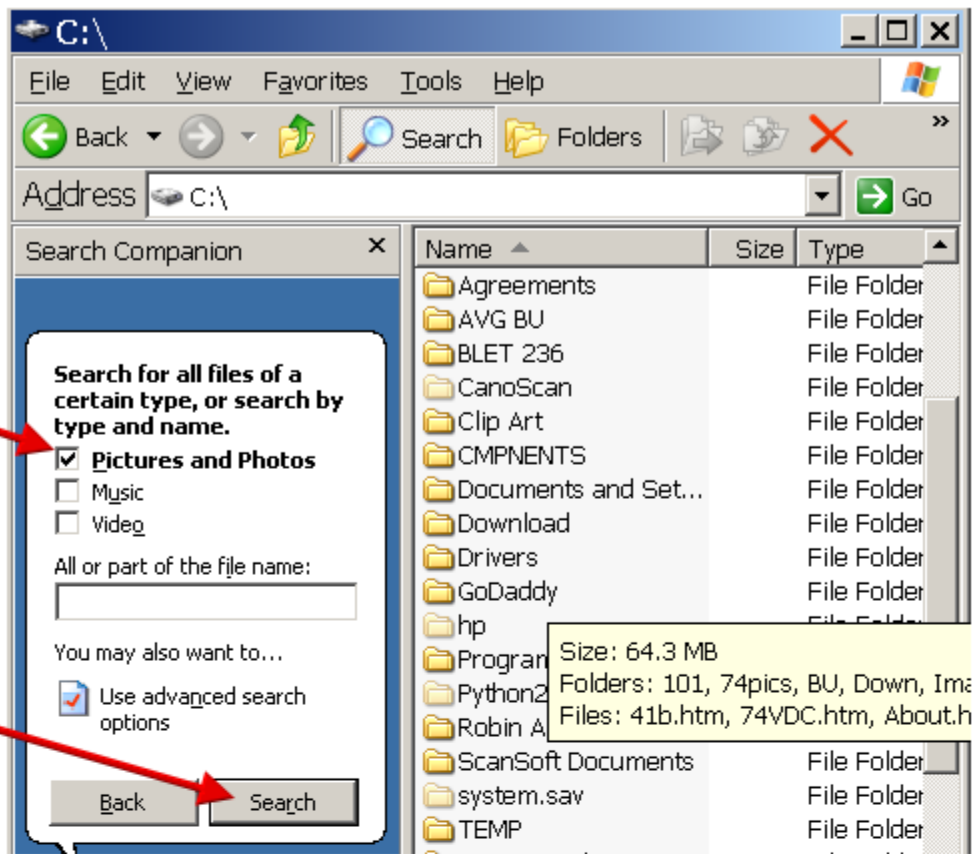


A new window will show up Now Left Click on Pictures, music, or Video



Check "Pictures and Photos" by Left clicking on BOX

Now Select "Search" by Left clicking Search button



Depending on how many pictures you have and how fast your computer is will determine how long it takes. You probably have time to go get a beer

You can place cursor over picture and it will tell you where the file is located at

OR

You can also RIGHT Click on picture and choose "Open Containing Folder"

